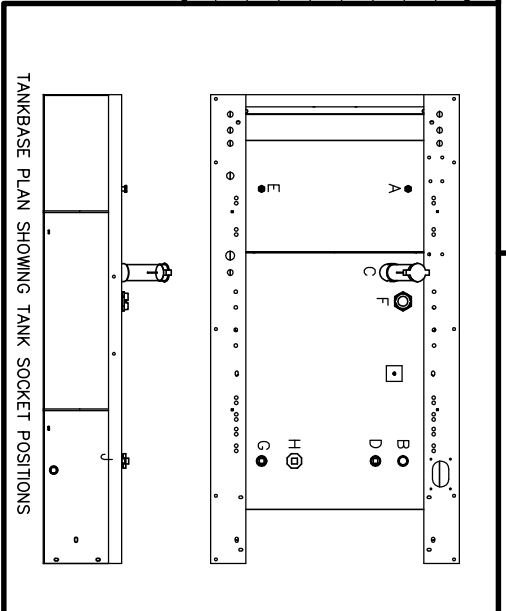
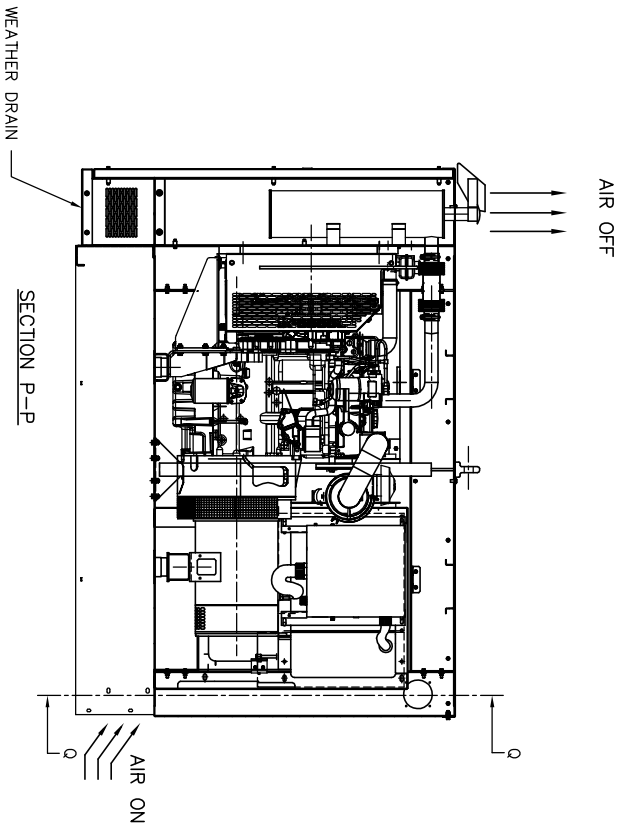
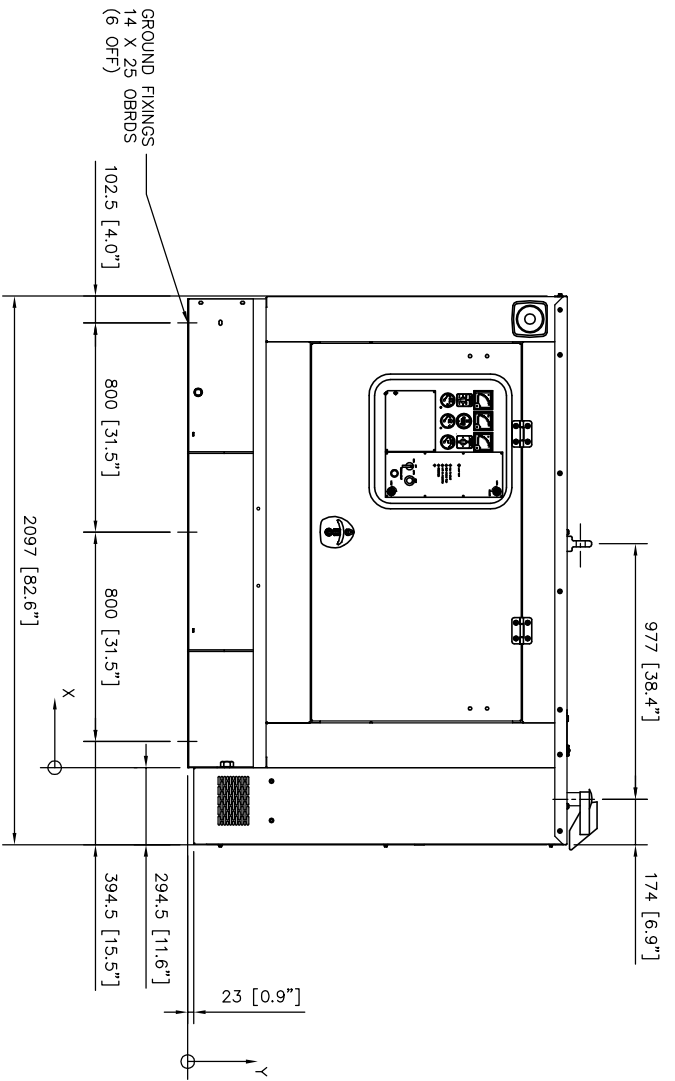
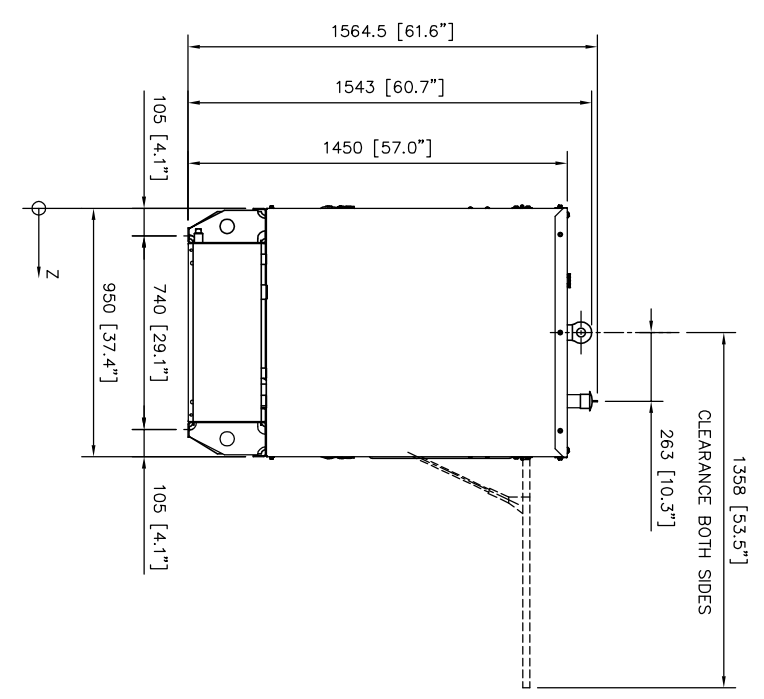
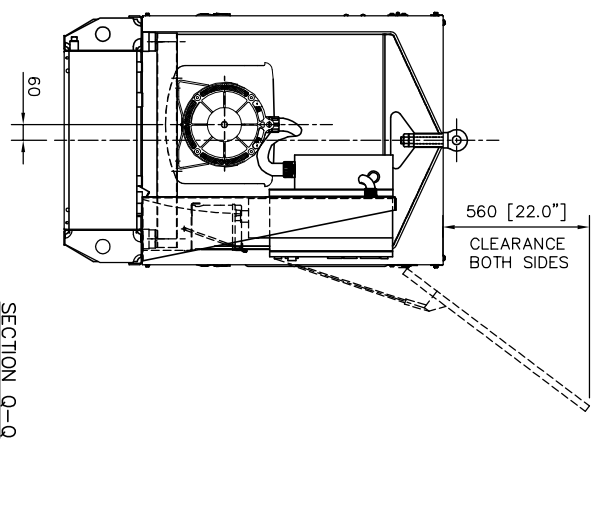
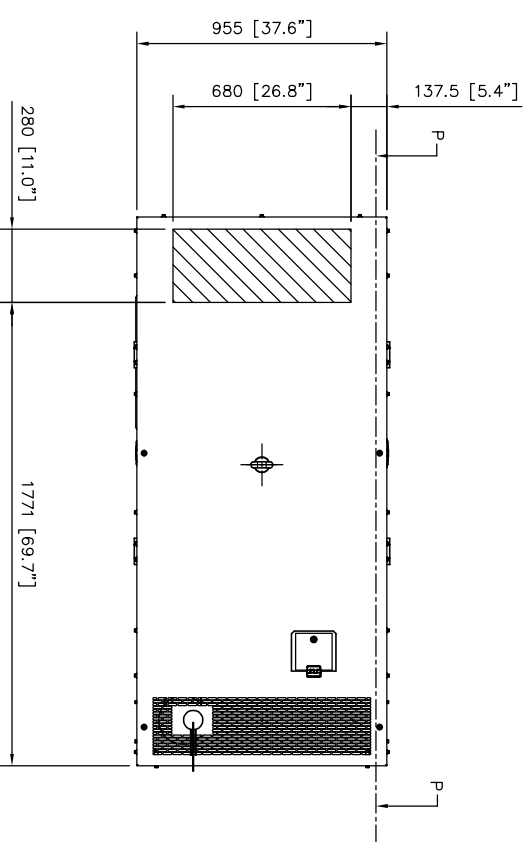


DESCRIPTION	DIM X	DIM Y	DIM Z
A FUEL SUPPLY - 3/8" BSP SOCKET	360 [14.1"]	280 [11.0"]	755 [29.7"]
B FUEL LEVEL SWITCH - 1" BSP HALF SOCKET	1400 [55.1"]	280 [11"]	735 [28.9"]
C FUEL FILL - 2" BSP SOCKET	680 [26.7"]	280 [11.0"]	685 [26.9"]
D REMOTE FUEL SUPPLY - 1" BSP HALF SOCKET	1400 [55.1"]	280 [11"]	630 [24.8"]
E FUEL RETURN GAUGE - 1 1/2" BSP HALF SOCKET	790 [31.1"]	280 [11.0"]	195 [7.6"]
F FUEL TANK VENT - 1" BSP HALF SOCKET	1400 [55.1"]	280 [11"]	735 [28.9"]
G REMOTE FUEL RETURN - 1 1/2" BSP HALF SOCKET	1400 [55.1"]	280 [11"]	195 [7.6"]
H FUEL TANK DRAIN - 3/4" BSP SOCKET	1435 [56.4"]	40 [1.5"]	131 [5.1"]



MODEL	ENG/ALT	WEIGHT (kg)			Centre of Gravity		
		(WITH OIL)	(WITH OIL & WATER)	X	Y	Z	
P27P1/P30E1/GEF30-1	1103A-33G1/LL1014Q	1094	1104	702	692	452	
P27P2/P30E2/GEF30-2	1103C-33G2or3/LL1014Q	1094	1104	702	692	452	
P30P1/P33E1/GEF33-1	1103A-33G1/LL1014S	1104	1114	707	691	451	
P30P2/P33E2/GEF33-2	1103C-33G2or3/LL1014S	1104	1114	707	691	451	
P24P1S/P26E1S/GEF26SP1	1103A-33G1/LLB1014S	1104	1114	707	691	451	
P24P2S/P26E2S/GEF26SP2	1103C-33G2or3/LLB1014S	1104	1114	707	691	451	



ISSUE	DESCRIPTION	1	2	3	4	5	6	7	8
A	FIRST ISSUE								
B	WEIGHTS AND CENTRE OF GRAVITY ADDED								
C	MODEL NAMES CHANGED IN CENTRE OF GRAVITY/MASS TABLE								
D	OLD CANOPY REPLACED WITH NEW DESIGN								
E	ADDED 1103C-33G2 & 3 MASS DATA								

TOLERANCES EXCEPT WHERE OTHERWISE STATED		DRN. BY JMCRAKCKEN		TITLE	
0 - 500mm	± 1mm	DATE 09/01/04		G.A. 1103A-33G1/1103C-33G2or3/LL1000S/O	
500 - 2000mm	± 2mm	APPD. BY <i>Samuel Jenkins</i>		IN A C1 SA CANOPY - NON-UL BASEFRAME.	
OVER 2000mm	± 3mm	DATE 16/03/2007		SHEET ORIGINAL	
ANGULAR	± 1°			SCALE 1:15	
DO NOT SCALE		ALL DIMENSIONS IN MILLIMETRES UNLESS OTHERWISE STATED		DRAWING NO. MGA6534	
				ISSUE E	